

Figure 1: Dorsal View

Sheep Brain

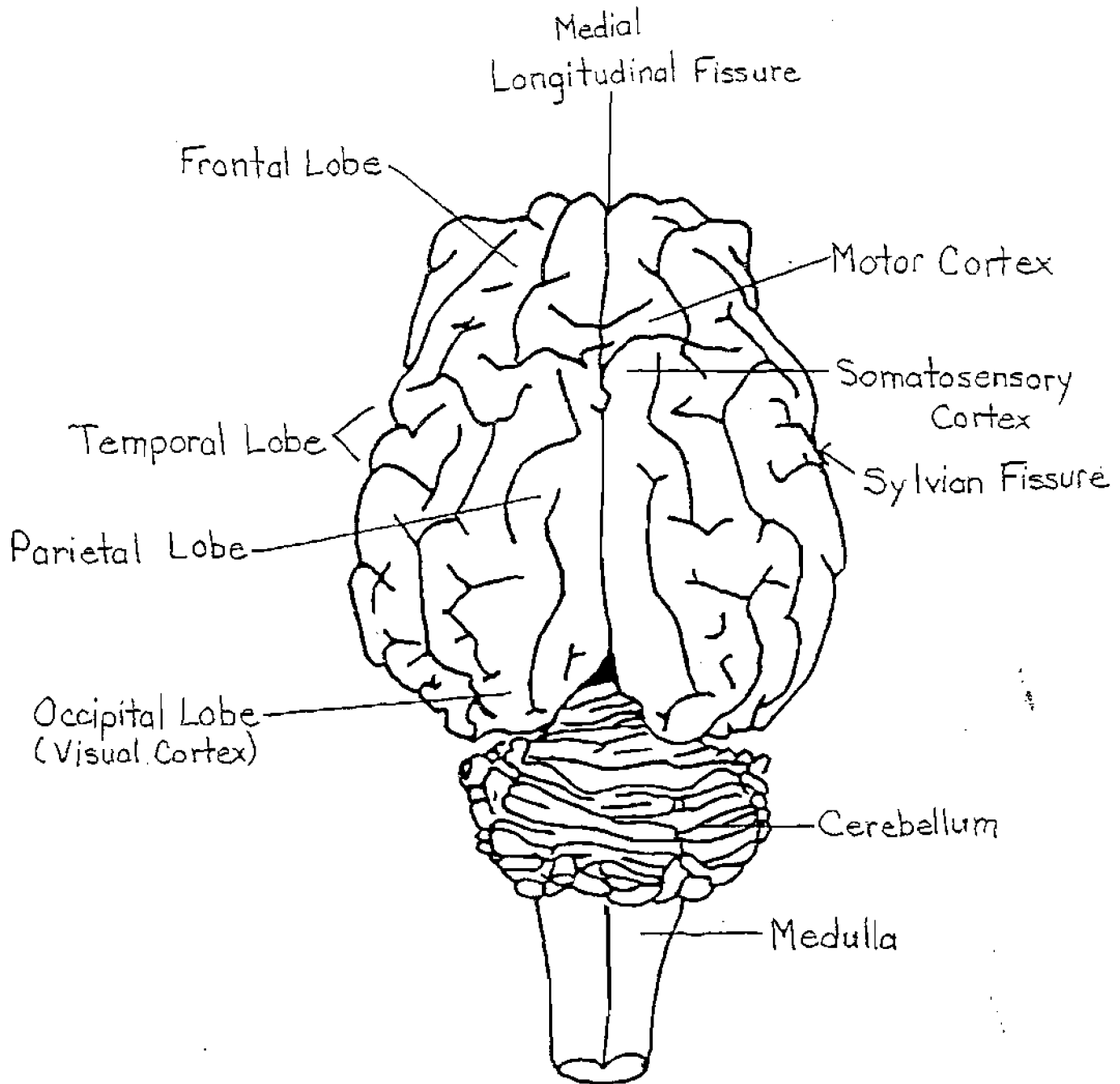


Figure 2: Cranial Nerves and Ventral View

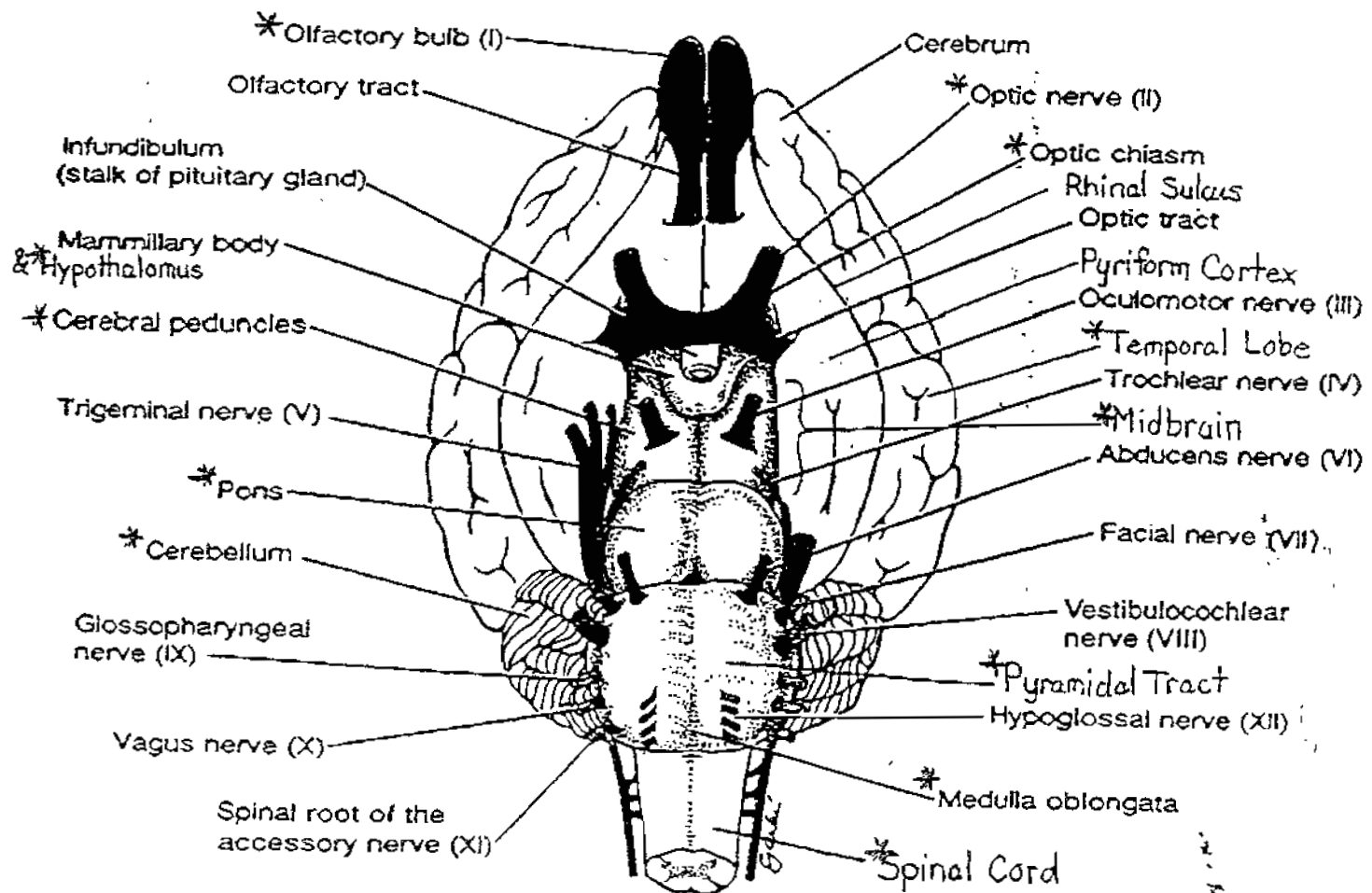
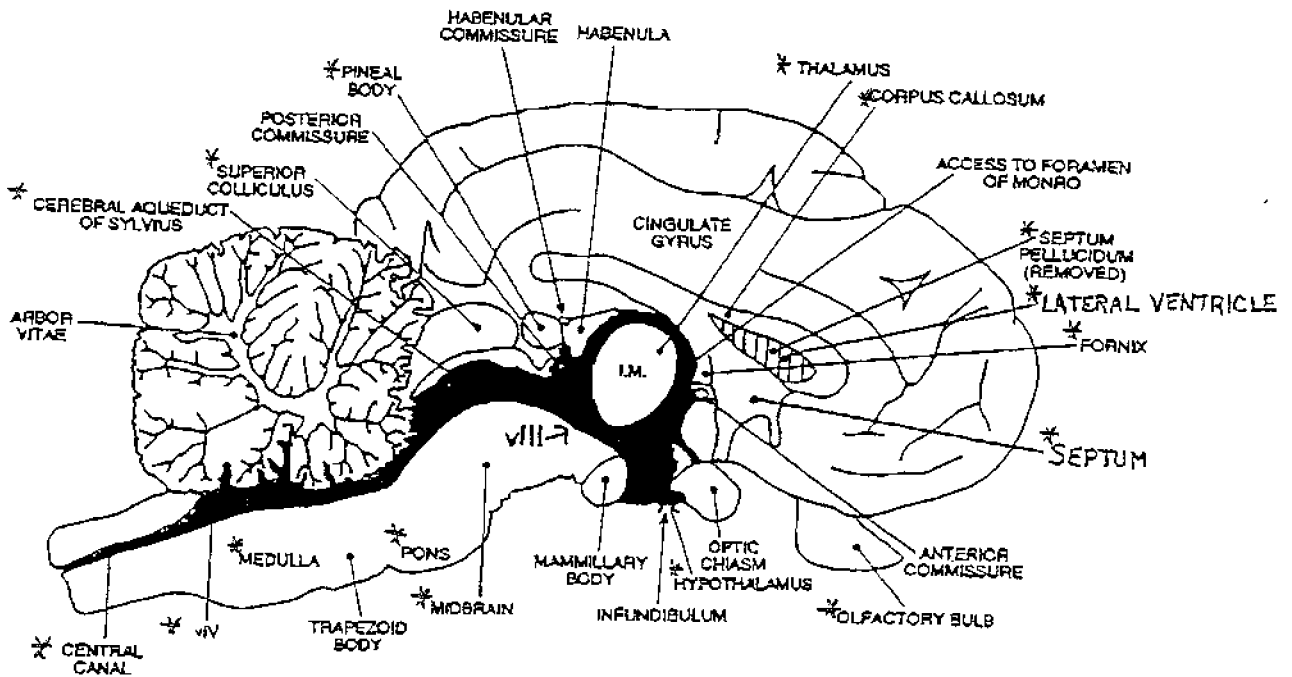


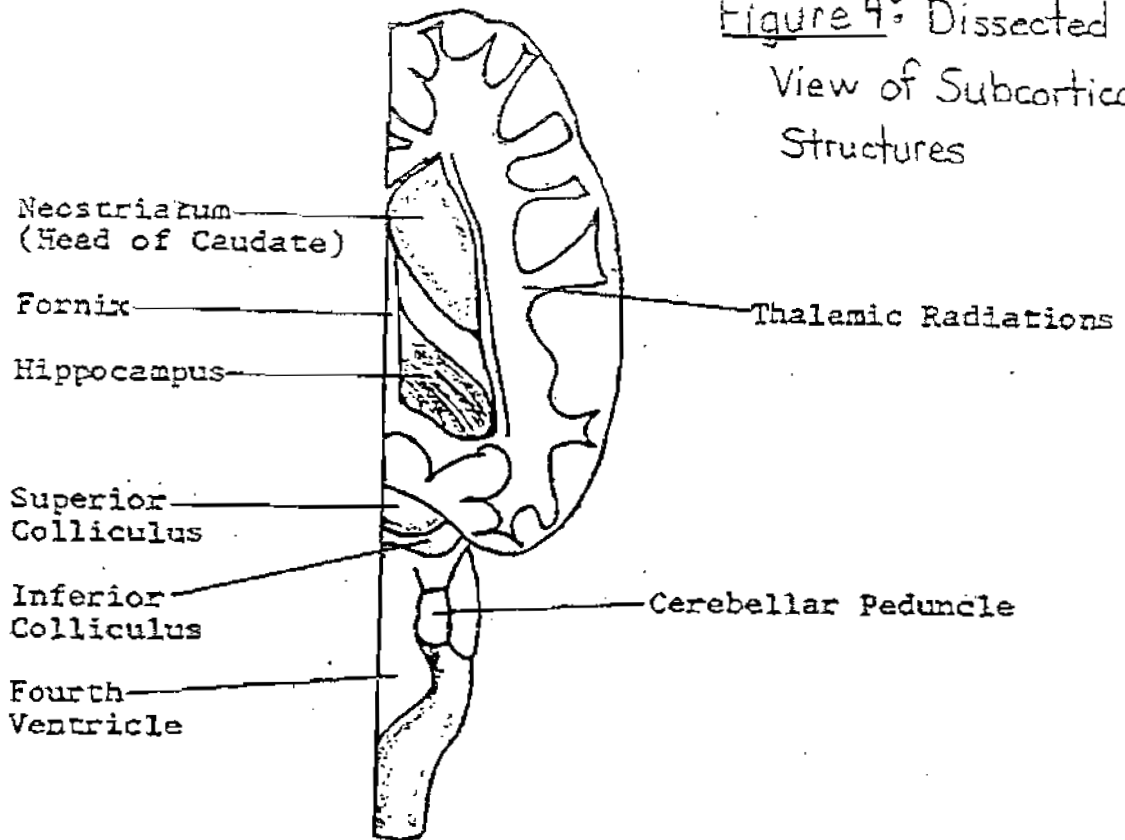
Figure 3: Medial View



Midsagittal section of the sheep brain. *I.M.* intermediate mass of the thalamus. The IIIrd ventricle (*vIII*), and the IVth ventricle (*vIV*), and cerebral aqueduct are black.

SHEEP BRAIN

Figure 4: Dissected (Internal)
View of Subcortical
Structures



V: Dorsal View After Horizontal
Section

